

# THE SUNNY UPDATE

Beyond the Horizons bi-weekly newsletter

## What's in this week's issue:

WHAT IS BTH - 1  
COORDINATORS - 2  
UPCOMING EVENTS - 3  
RAY OF SUNSHINE - 4  
ADVISORS AND SOCIAL MEDIA - 5



## WHAT IS BEYOND THE HORIZONS

### PILOT PROGRAM LAUNCH

Welcome to Beyond the Horizons (BTH)! BTH is a multicultural mentoring program focused on inclusion, leadership, community. To launch our pilot program we have 38 mentors and 33 mentees! We are excited to have our mentors and mentees work together to explore the university and learn about all of the resources that it has to offer.

“

**DO NOT FOLLOW WHERE THE PATH MAY  
LEAD. GO INSTEAD WHERE THERE IS NO  
PATH AND LEAVE A TRAIL.  
- RALPH WALDO EMERSON**

# COORDINATORS



**Grey Peoples**  
**[gxp481@miami.edu](mailto:gxp481@miami.edu)**  
**Office hours: Monday, 6:30-7:30**



**Tikiyah Ivey**  
**[tmi10@miami.edu](mailto:tmi10@miami.edu)**  
**Office hours: Tuesday, 2:30 p.m. - 3:30 p.m.**



**Ajiri Uzere**  
**[axu140@miami.edu](mailto:axu140@miami.edu)**  
**Office hours: Monday, 11 a.m. - 12 p.m.**



**Doreen Gustave**  
**[dpg53@miami.edu](mailto:dpg53@miami.edu)**  
**Office hours: Tuesday, 6:30 p.m. - 7:30 p.m.**

# Reminders

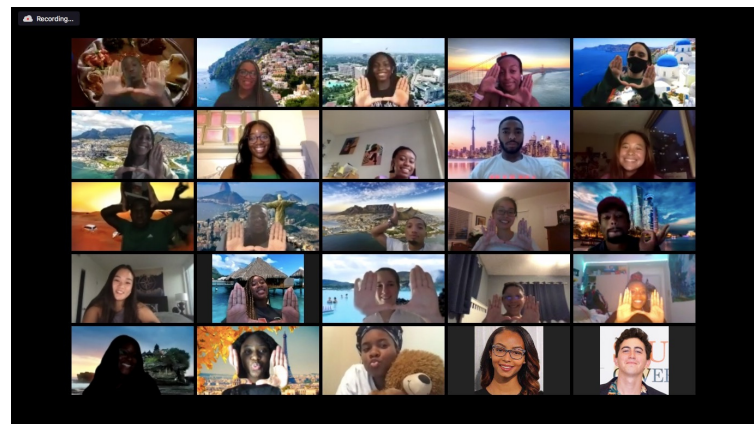
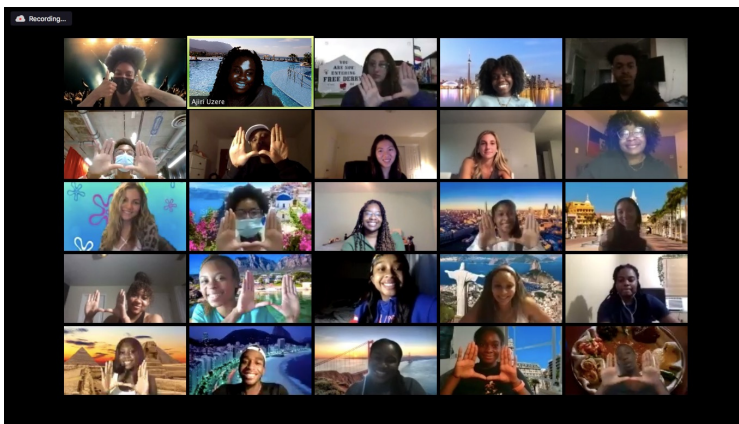
- **Attend our monthly BTH event**
- **Be sure to attend AT LEAST 1 MSA event a month**
- **Fill out your submission form so we have proof of your attendance (check the page )**



# RAYS OF SUNSHINE

"Ray of Sunshine" is an initiative we created to highlight the accomplishments (big or small), show gratitude, of our mentees and mentors in the BTH program.

**Our first ray goes out to all of our awesome mentors and mentees that are participating in BTH. THANK YOU!**



**Our second ray goes out to our advisors Christopher Clarke and Kennedy Robinson. Without them, none of this would be possible. Thank you so much!**





# ADVISORS



**CHRISTOPHER CLARKE**

Director of Multicultural Student Affairs  
caclarke@miami.edu



**KENNEDY ROBINSON**

Assistant Director of Multicultural Student Affairs  
kbrobinson@miami.edu

**FOLLOW US ON INSTAGRAM**  
**@UMBEYONDTHEHORIZONS**

**JOIN OUR GROUP ME CHAT!**

[HTTPS://GROUPME.COM/JOIN\\_GROUP/62748923/7NIORLKH](https://groupme.com/join_group/62748923/7NIORLKH)



**EVENT/ MEET-UP SUBMISSION FORM**

**FEEDBACK FORM**

**RAY OF SUNSHINE FORM**